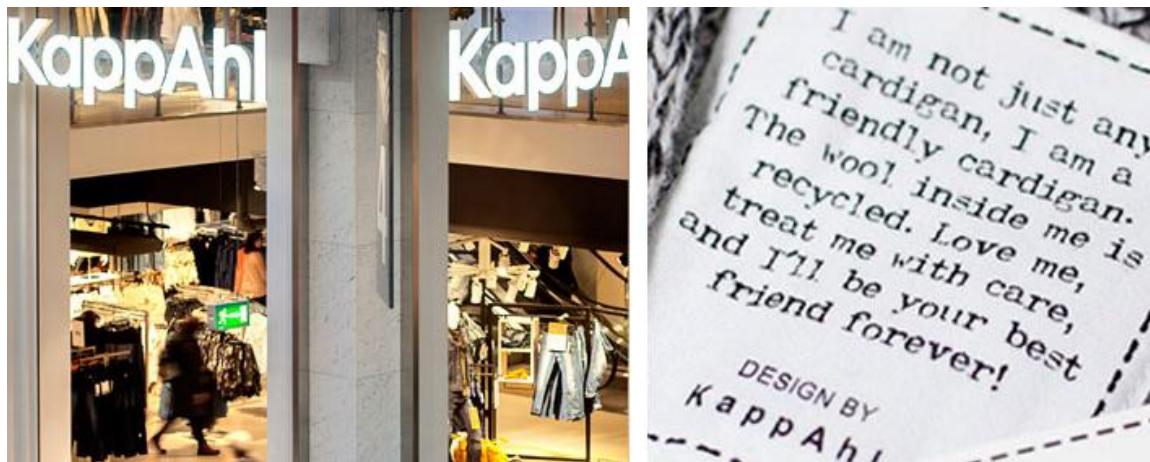


KappAhl

PRESS RELEASE

Möln dal / 25 September 2013



INVITATION TO PRESENTATION OF KAPPAHL FULL YEAR 2012/2013

KappAhl will announce its full year result (September 2012 - August 2013) on Wednesday 2 October at 07.30 (CET).

A presentation of the report and a teleconference will be held for analysts, the media and investors on the same day at 09.30 (CET) at Operaterrassen in Stockholm. The report will be presented by Johan Åberg, President and CEO and Claes-Göran Starud, acting CFO.

Please announce participation for Operaterrassen at www.kappahl.com/presentations and "2013-10-02 Live webcast Q4 2012/2013".

The presentation will be held in English and will also be live webcasted at www.kappahl.com/presentations. Questions can be asked via the teleconference or via the webcast. It is also possible to listen to the webcast afterwards at the same address.

To participate, please call 5 minutes before the opening of the conference:

Sweden +46 (0)8 5055 6477
Great Britain +44 203 364 5372

For further information, please contact:

Charlotte Högberg, Head Public Relations, tel +46 704 71 56 31, charlotte.hogberg@kappahl.com
Claes-Göran Starud, acting CFO, tel. +46 704 71 56 64, claes-goran.starud@kappahl.com

KappAhl was founded 1953 and is a leading Nordic fashion chain with close to 400 stores and 4 500 co-workers in Sweden, Norway, Finland, Poland and the Czech Republic. KappAhl designs, markets and sells value-for-money fashion and focus in particular on women 30-50 years of age. In 1999, KappAhl was the first fashion chain to receive environmental management standard certification. During the financial year 2011/2012, KappAhl had sales of SEK 4,6 billion. KappAhl shares are listed on the NASDAQ OMX Stockholm. Further information is available at www.kappahl.com

KappAhl AB (publ) discloses the information provided here pursuant to the Securities Market Act and/or the Financial Instruments Trading Act. The information was submitted for publication on 25 September 2013 at 2.00 p.m.